

## Creo 2.0 – Offline Installation Guide


1. Download the **Creo 2.0** DVD image:

- [www.ptc.com/appserver/auth/it/esd/academicFree.jsp](http://www.ptc.com/appserver/auth/it/esd/academicFree.jsp)
  - If necessary, enter your PTC username (your email address) and password, and then click **LOG IN**.  
*Create an account at [www.ptc.com/appserver/common/account/ptcacademic.jsp](http://www.ptc.com/appserver/common/account/ptcacademic.jsp)*
  - Accept the Export Agreement and then click **Continue**.
  - To the right of **Win 32-64 DVD (4485 MB)**, click **Download Manager** to begin the download. *The **HTTP** link will also work but may be slower.*

2. Download the Get HostID tool so that you can find your computer's Host ID:

- [apps.ptc.com/schools/Get\\_HostID.zip](http://apps.ptc.com/schools/Get_HostID.zip)

*The Host ID is required to generate a license file for your computer.*

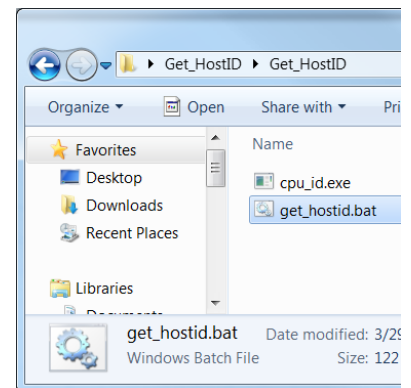
3. Right-click the downloaded  **Get\_HostID.zip** file, select **Extract All** and then select a location the folder will be unzipped to. *Select a location you can easily access, such as your Desktop.*

4. Use Windows Explorer to open the resulting **Get\_HostID** folder:

- Double-click the batch file named **get\_hostid**.
- Record your **PTC HOSTID**.

```
PTC HOSTID = 00-1D-09-B5-DB-01
```

```
D:\Users\mcheli\Downloads\Get_HostID\Get_HostID>
```



5. Using your Host ID and Product Code, generate a license using the appropriate link below:


- Student Edition: [www.ptc.com/go/studentlicense4creo2](http://www.ptc.com/go/studentlicense4creo2)
- Academic Single Edition: [www.ptc.com/go/singlelicense4creo2](http://www.ptc.com/go/singlelicense4creo2)
- Academic Lab Edition: [www.ptc.com/go/lablicense4creo2](http://www.ptc.com/go/lablicense4creo2)
- eStore Purchases: [www.ptc.com/go/storelicense4creo2](http://www.ptc.com/go/storelicense4creo2)

6. After the license file is emailed to you, save it to **C:\Users\Public\Documents**.

*The license file will have a name such as **sw\_license\_email\_#####.dat**.*

7. **Unzip** the downloaded DVD image (MED-100WIN-CD-390\_M###\_Win32-64.zip):

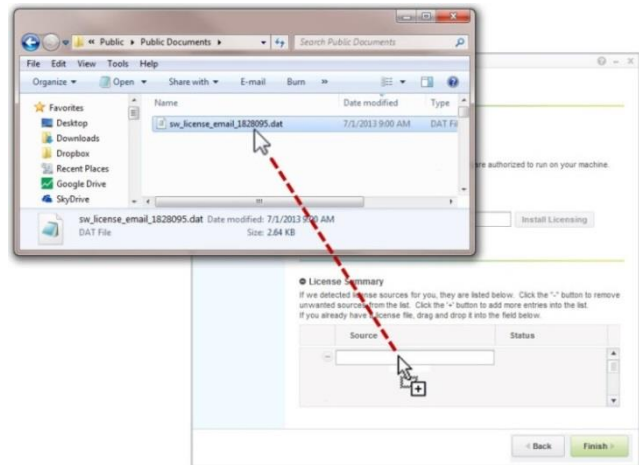
*### represents the build code of Creo you downloaded. The actual number will vary as additional Creo builds are released.*

- Right-click the downloaded zip file, select **Extract All** and then select a location the DVD will be unzipped to. *Select a location you can easily access, such as your Desktop.*
- Use Windows Explorer to open the resulting **MED-100WIN-CD-390\_M###\_Win32-64** folder. *This folder can be copied to a shared drive, DVD or thumb drive and then be used to install the software on other computers.*
- Temporarily disable all firewall, anti-virus and anti-spyware applications.
- Run **setup.exe**.
  - When installing on Windows 7, right-click **setup.exe** and select  **Run as administrator** from the pop-up menu.

8. From the PTC Installation Assistant dialog box:

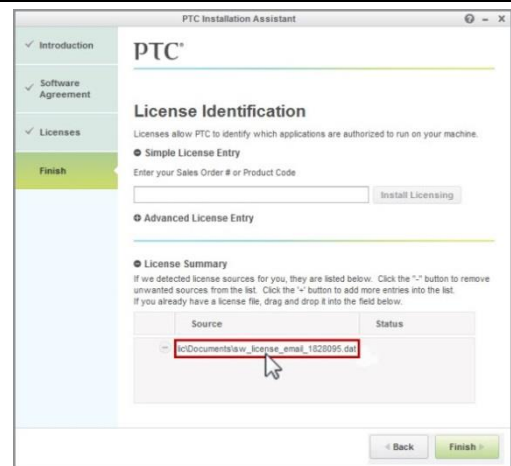
- Select **Install or add new software** and click **Next**.
- **Accept** the license agreement and click **Next**

9. Using Windows Explore, drag and drop your license file from **C:\Users\Public\Documents** into the License Summary text box.



10. After dropping the license file into place, you will see the path to the file listed in the Source text box.

- When you see the “**Success!**” message, click **Next**.
- In the application list, deselect **MKS Platform Components** along with all other applications you do not need, and then click **Install**.
- After the installation is complete, click **Finish**.



**You are now ready to use Creo 2.0 - Student Edition**

- We recommend that you now use Creo Standards to select your default unit system and drawing standard [apps.ptc.com/schools/creo\\_standards\\_2.pdf](http://apps.ptc.com/schools/creo_standards_2.pdf).
- For additional resources, please visit [www.ptc.com/go/academicprogram](http://www.ptc.com/go/academicprogram). If you need technical support please visit one of the following:
  - **Support Forum:** [communities.ptc.com/community/academic-program/support](http://communities.ptc.com/community/academic-program/support)
  - **Support Request:** [www.ptc.com/go/academic-request](http://www.ptc.com/go/academic-request)

